

FOR LEASE

# COMMERCE PARK DISTRIBUTION CENTER

1212 N 39TH ST, TAMPA, FL 33605



DOWNTOWN TAMPA

SELMON EXPRESSWAY

E ADAMO DRIVE

[LeaseThisWarehouse.com](https://www.leasethiswarehouse.com)  
by east>

# COMMERCE PARK DISTRIBUTION CENTER



## PROPERTY HIGHLIGHTS

Commerce Park Distribution Center consists of four warehouses totaling 188,750 SF in the heart of East Tampa's industrial submarket. The park has frontage on the Selmon Expressway with easy access to Downtown Tampa, Tampa International Airport, Port Tampa Bay along with major distribution routes I-4, I-75, and I-275.

	PROPERTY FEATURES			
	TOTAL SF	CLEAR HEIGHT	LOAD TYPE	BLDG DIMENSIONS
BLDG 1	56,800 SF	22'	FRONT-LOAD	160' x 355'
BLDG 2	64,000 SF	22'	FRONT-LOAD	160' x 400'
BLDG 3	31,950 SF	18'	REAR-LOAD	90' x 355'
BLDG 4	36,000 SF	18'	REAR-LOAD	90' x 400'

# SUITE 303

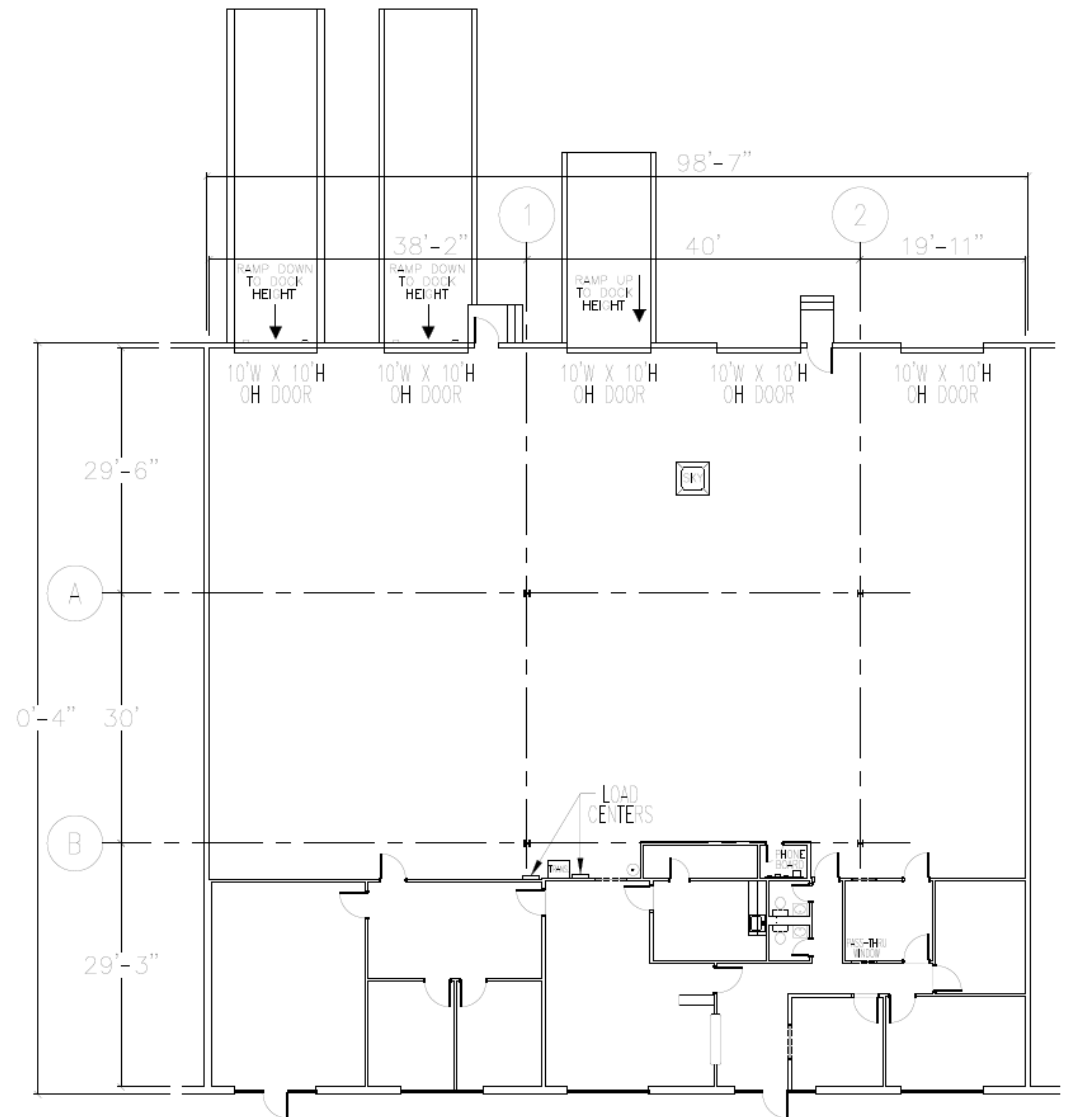
TOTAL SF 9,000 SF

OFFICE SF 2,562 SF

LOADING Two (2) Dock High Doors  
One (1) Drive In Ramp  
Two (2) Van High Doors

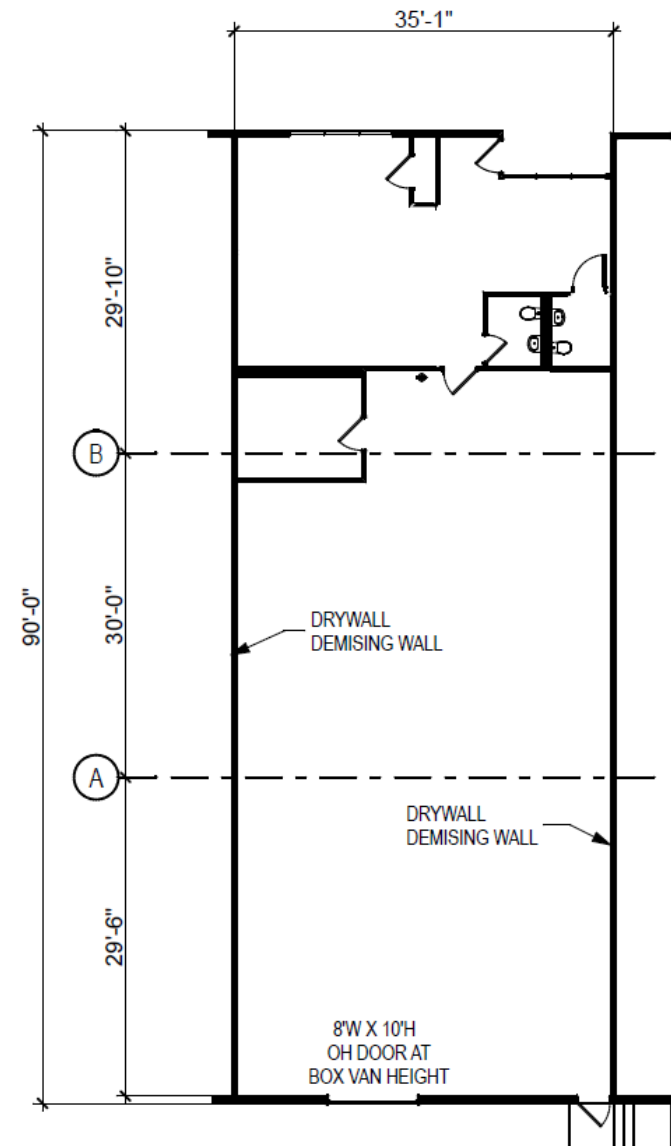
CLEAR HEIGHT 18'

AVAILABLE 5/1/2026



# SUITE 330

<b>TOTAL SF</b>	3,150 SF
<b>OFFICE SF</b>	853 SF
<b>LOADING</b>	One (1) Van High Door
<b>CLEAR HEIGHT</b>	18'
<b>AVAILABLE</b>	Within Thirty (30) Days



# SUITE 406

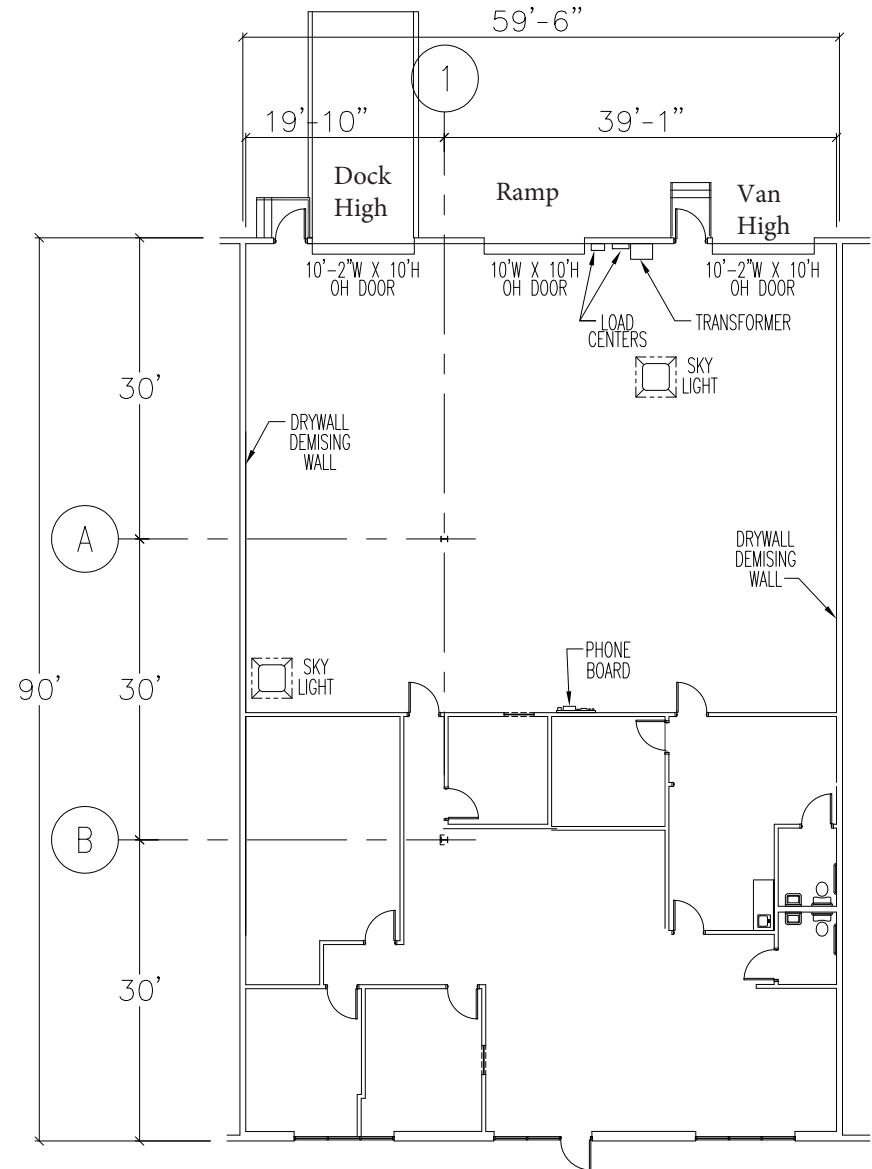
**TOTAL SF** 5,400 SF

**OFFICE SF** 2,479 SF

**LOADING** One (1) Dock High Door  
One (1) Ramped Drive-in Door  
One (1) Van High Door

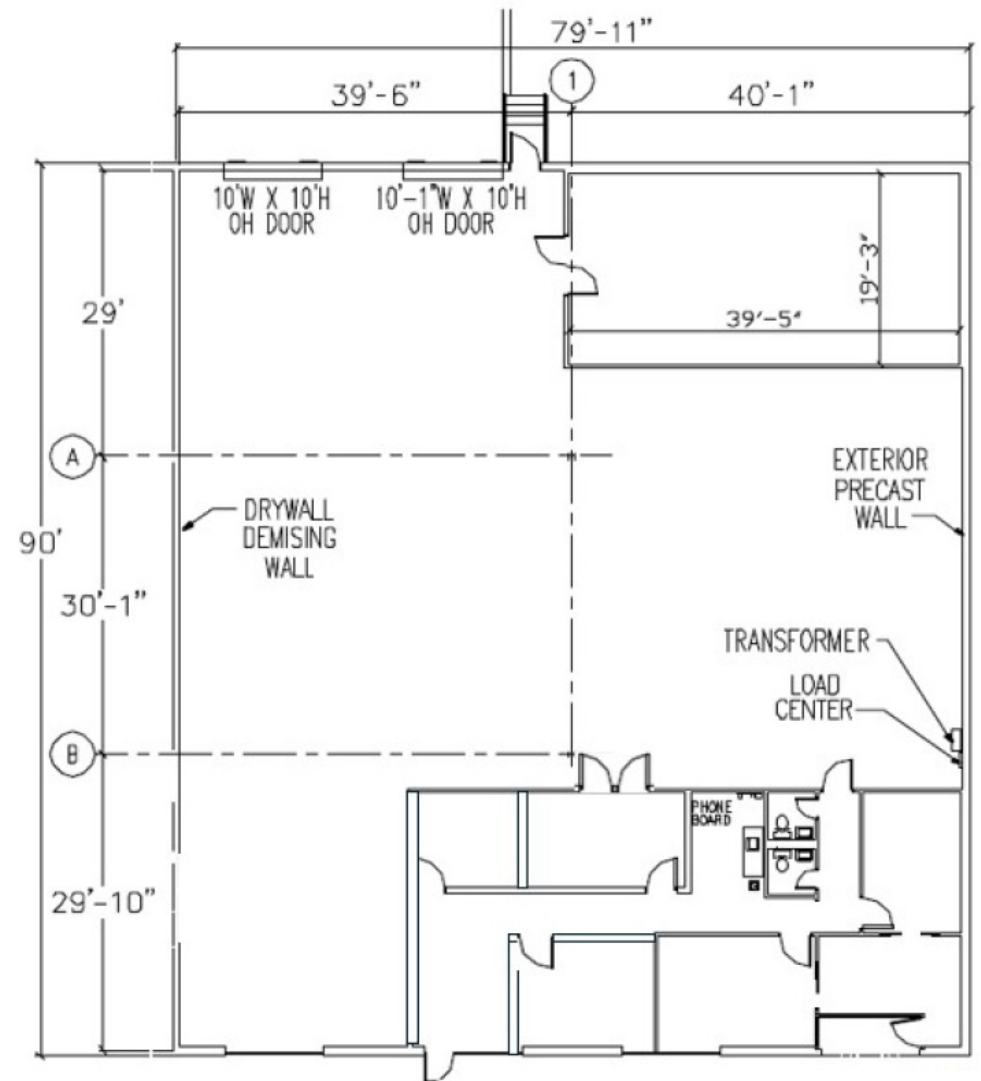
**CLEAR HEIGHT** 18'

**AVAILABLE** 4/1/2026

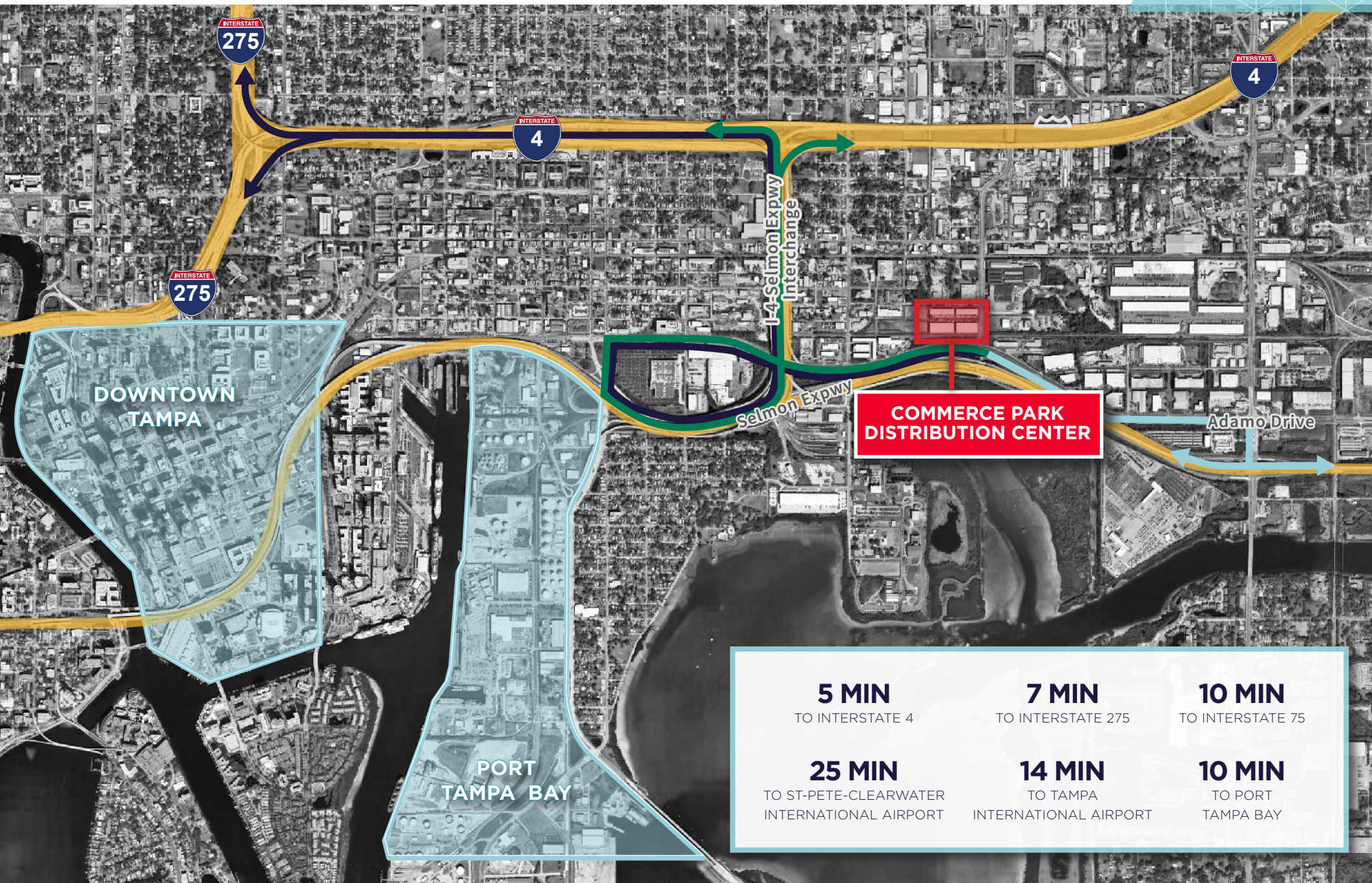


# SUITE 438

<b>TOTAL SF</b>		7,200 SF
<b>OFFICE SF</b>	-	1,800 SF
<b>LOADING</b>	One (1) Dock High Door One (1) Drive-in Ramp	
<b>CLEAR HEIGHT</b>		18'
<b>AVAILABLE</b>		4/1/2026



# LOCATION HIGHLIGHTS



**COMMERCE PARK  
DISTRIBUTION CENTER**

**5 MIN**

TO INTERSTATE 4

**7 MIN**

TO INTERSTATE 275

**10 MIN**

TO INTERSTATE 75

**25 MIN**

TO ST-PETE-CLEARWATER  
INTERNATIONAL AIRPORT

**14 MIN**

TO TAMPA  
INTERNATIONAL AIRPORT

**10 MIN**

TO PORT  
TAMPA BAY



**FOR MORE INFORMATION, CONTACT:**

**LISA ROSS, SIOR**  
Executive Director  
+1 813 760 3209  
lisa.ross@cushwake.com

**TREY CARSWELL, SIOR**  
Executive Director  
+1 813 230 6131  
trey.carswell@cushwake.com

**SAM KOROLOS**  
Director  
+1 704 989 1327  
sam.korolos@cushwake.com

**MELISSA WATTERWORTH**  
Senior Associate  
+1 813 599 2190  
melissa.watterworth@cushwake.com



**LeaseThisWarehouse.com**  
by east>

©2025 Cushman & Wakefield. All rights reserved. The information contained in this communication is strictly confidential. This information has been obtained from sources believed to be reliable but has not been verified. NO WARRANTY OR REPRESENTATION, EXPRESS OR IMPLIED, IS MADE AS TO THE CONDITION OF THE PROPERTY (OR PROPERTIES) REFERENCED HEREIN OR AS TO THE ACCURACY OR COMPLETENESS OF THE INFORMATION CONTAINED HEREIN, AND SAME IS SUBMITTED SUBJECT TO ERRORS, OMISSIONS, CHANGE OF PRICE, RENTAL OR OTHER CONDITIONS, WITHDRAWAL WITHOUT NOTICE, AND TO ANY SPECIAL LISTING CONDITIONS IMPOSED BY THE PROPERTY OWNER(S). ANY PROJECTIONS, OPINIONS OR ESTIMATES ARE SUBJECT TO UNCERTAINTY AND DO NOT SIGNIFY CURRENT OR FUTURE PROPERTY PERFORMANCE.