




# AIRPORT EAST INDUSTRIAL PARK

14476 DUVAL PL W, JACKSONVILLE, FL 32218

 2,250 SF -  
10,000 SF Units

 20' - 24' Clear  
Height

 Grade Level  
with shared  
outdoor  
loading dock

 3.5 Acres  
Outside Storage

*Warehousing - Distribution - Light Manufacturing - Wholesaling*

## AVAILABILITY

Building #	Unit #	Size (SF)
200	206	5,000
400	404/405	10,000
400	406	5,000
700	703	5,250
700	707	5,000

## PROPERTY HIGHLIGHTS

- 2,250 SF - 10,000 SF units
- 20' - 24' clear height
- Grade level loading
- Shared outdoor Loading Docks
- 3.5± Acres for Outside Storage
- Ample parking on site
- Wet Sprinkler System
- Monument Signage
- Fluorescent Lighting
- 200a/120-208v



# BUILDING 200 | UNIT 206 | 5,000 SF

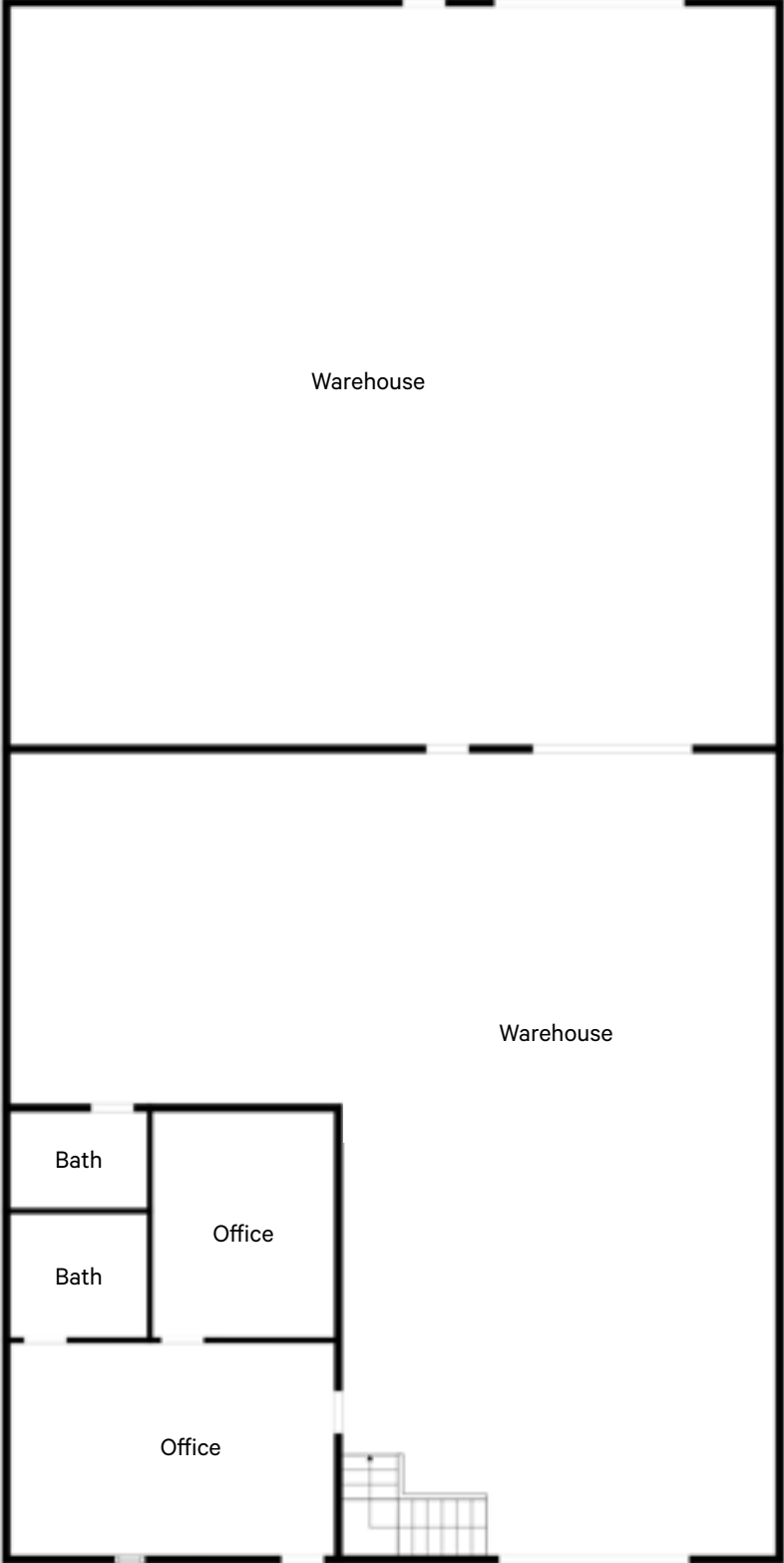
## Specifications

Warehouse: ±4,470 SF

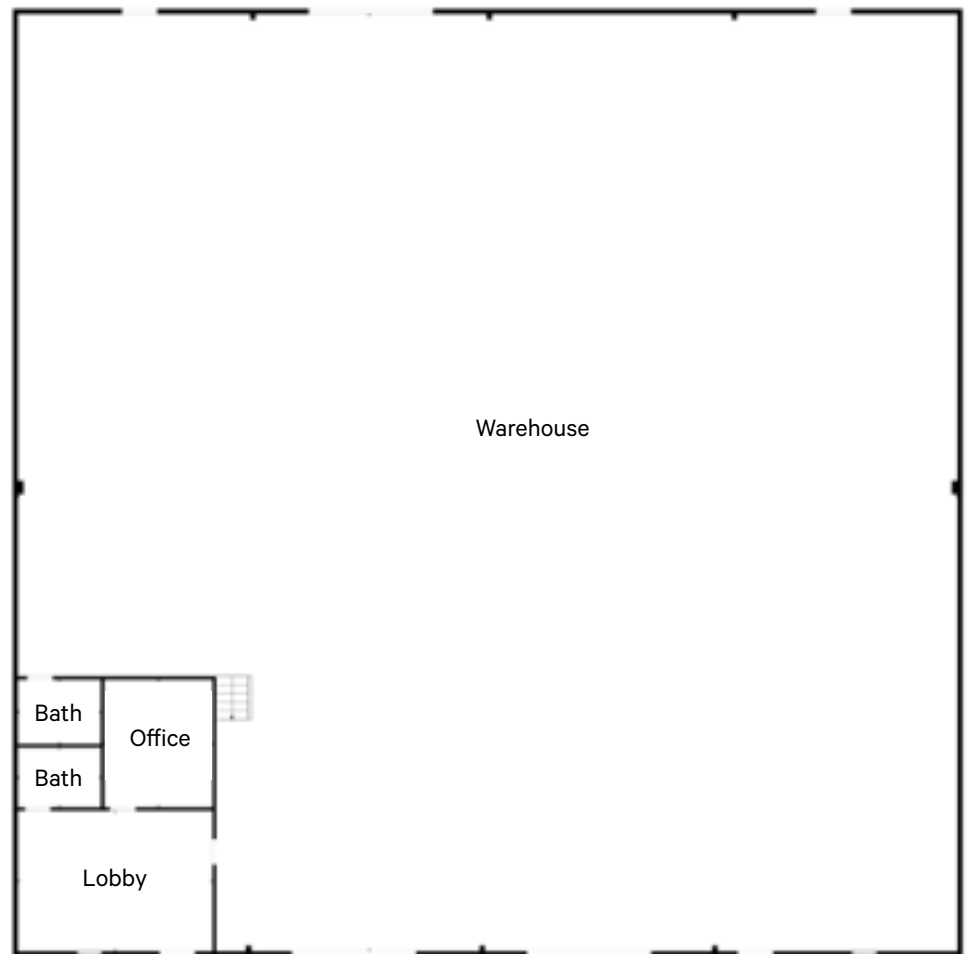
Office: ±530 SF

Loading: 2 Roll-up Doors (11x14)

Power: 200a/120-208v



# BUILDING 400 | UNIT 404/405 | 10,000 SF



## Specifications

Warehouse: ±9,470 SF

Office: ±530 SF

Loading: 3 Roll-up Doors  
(11x14)

Power: 200a/120-208v

# BUILDING 400 | UNIT 406 | 5,000 SF

## Specifications

---

Warehouse: ±4,150 SF

---

Office: ±850 SF

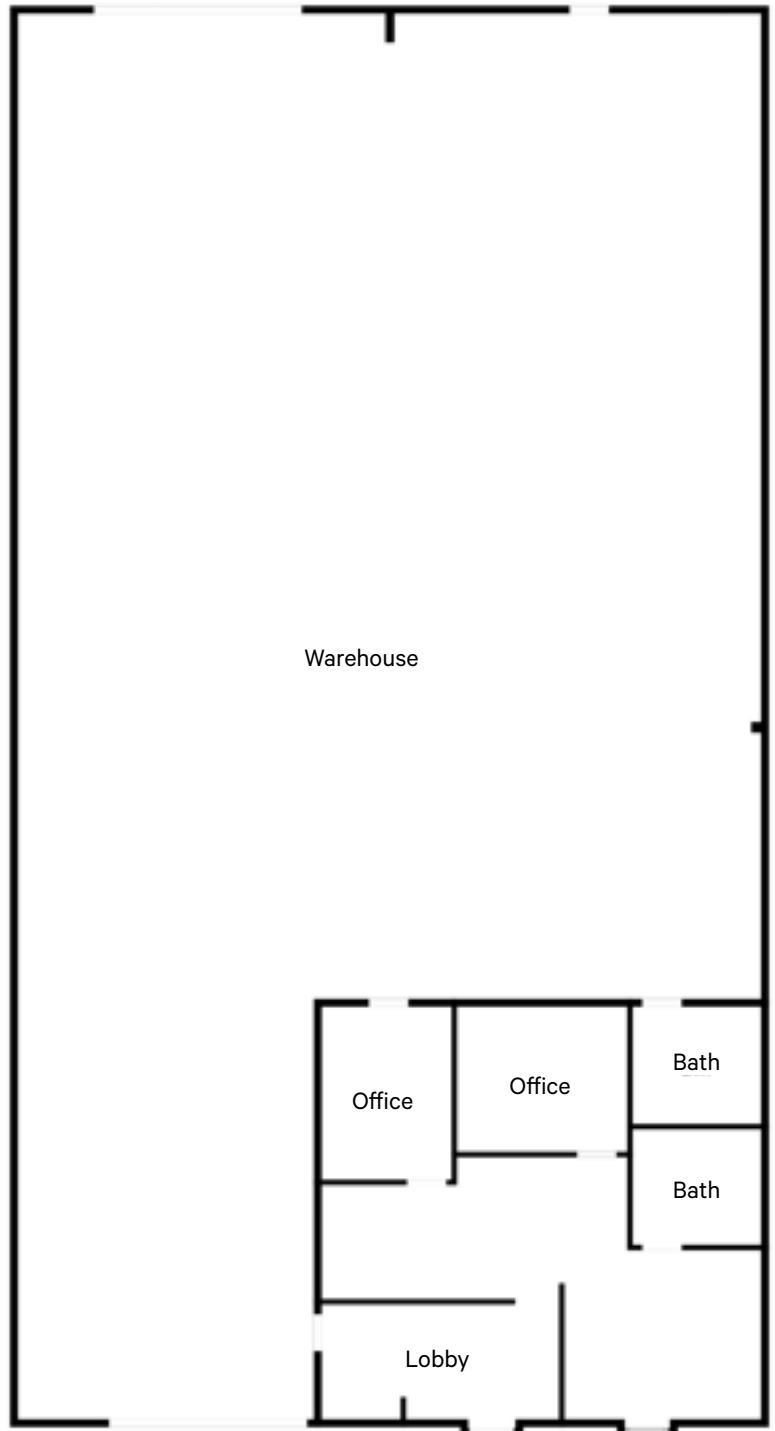
---

Loading: 2 Roll-up Doors  
(11x14)

---

Power: 200a/120-208v

---



# BUILDING 700 | UNIT 703 | 5,250 SF

## Specifications

---

Warehouse: ±4,350 SF

---

Office: ±900 SF

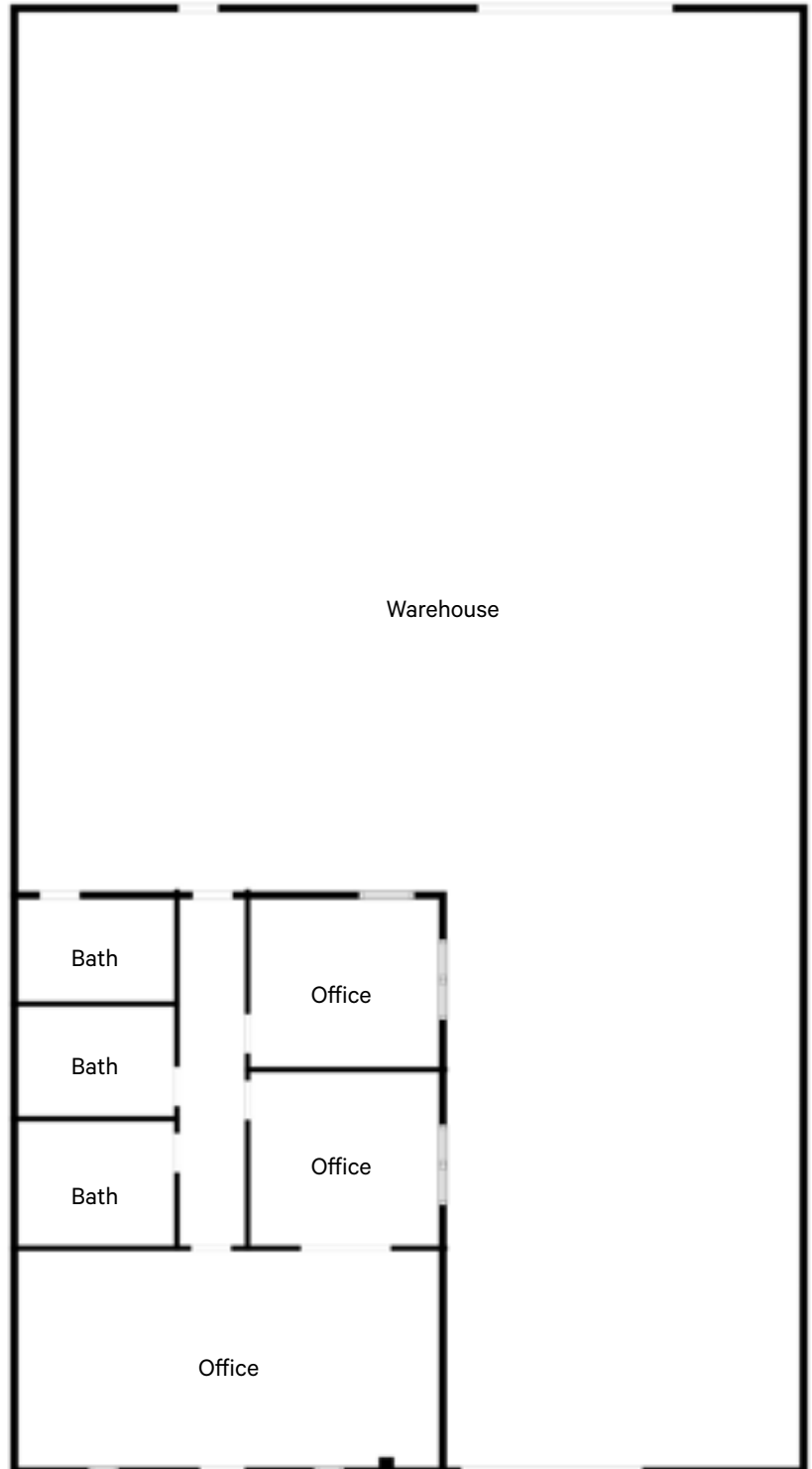
---

Loading: 2 Roll-up Doors  
(11x14)

---

Power: 200a/120-208v

---



# BUILDING 700 | UNIT 707 | 5,000 SF

## Specifications

---

Warehouse: ±4,470 SF

---

Office: ±530 SF

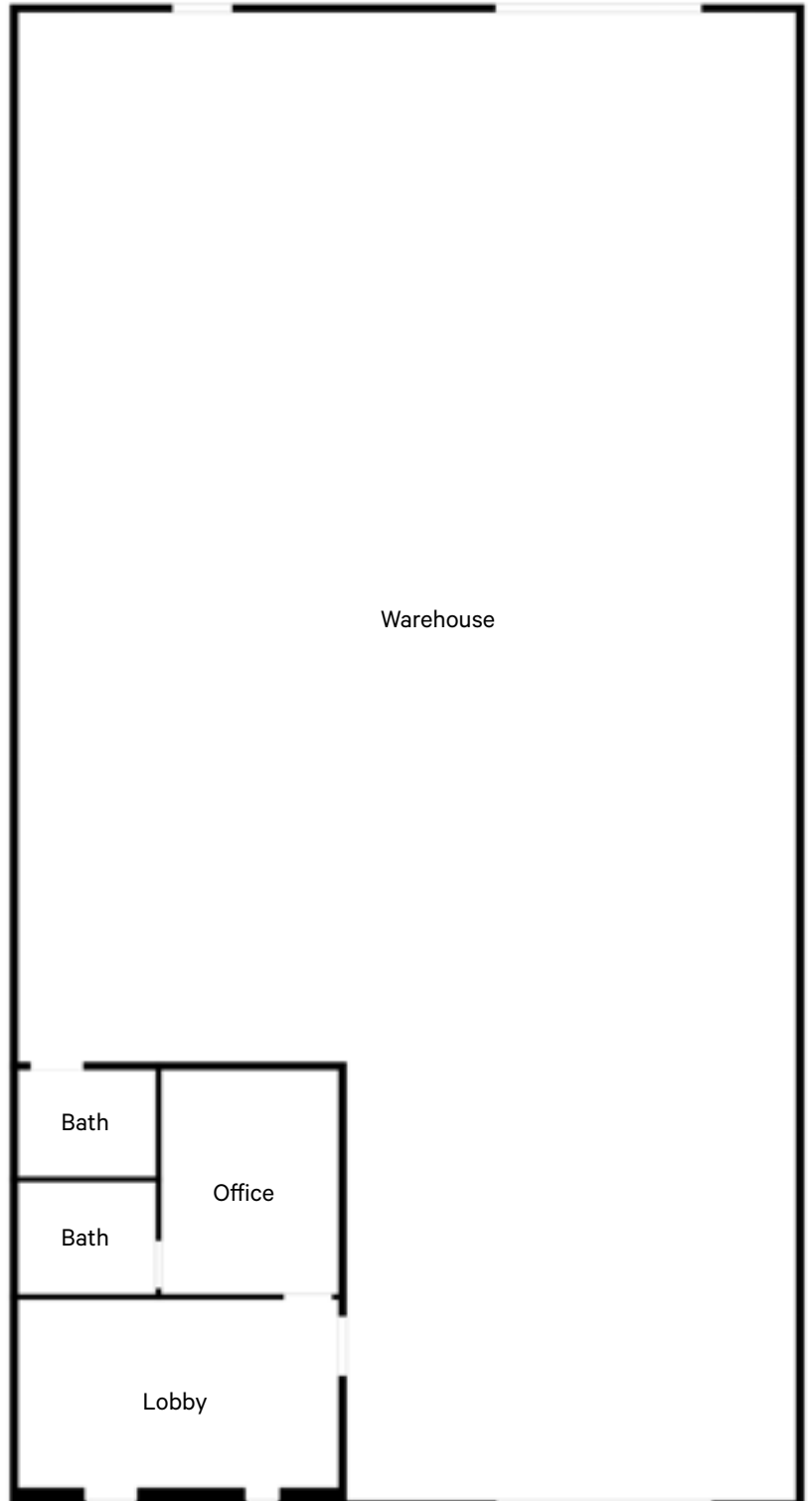
---

Loading: 2 Roll-up Doors  
(11x14)

---

Power: 200a/120-208v

---



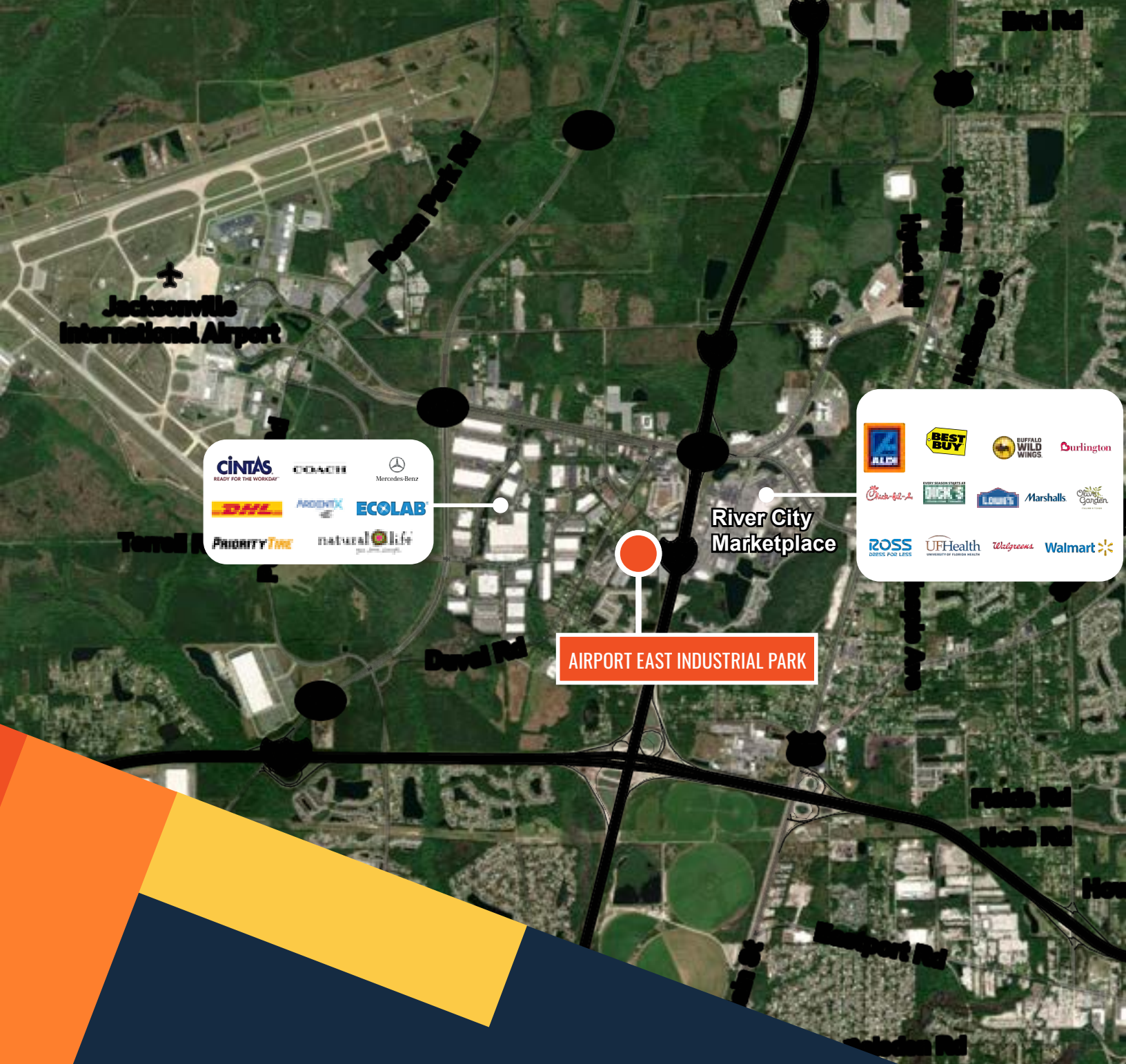
Position business for success at Airport East Industrial Park, a premier eight-building industrial park within Jacksonville's thriving Northside submarket. Spanning 230,000 SF of versatile space across 29 fenced and gated acres, this well-maintained property delivers the ideal foundation for industrial, logistics, and light manufacturing operations.



Saint Johns River

# PROPERTY PHOTOS





**AIRPORT EAST INDUSTRIAL PARK**

**FOR MORE INFORMATION, PLEASE CONTACT ALLIAH HARDEE BY EMAIL OR PHONE:  
ALLIAH.HARDEE@CBRE.COM +1 904 814 9961**

**Kyle Fisher**  
First Vice President

**Kyle Murphy**  
Associate

**Alliah Hardee**  
Associate

© 2026 CBRE, Inc. All rights reserved. This information has been obtained from sources believed reliable, but has not been verified for accuracy or completeness. You should conduct a careful, independent investigation of the property and verify all information. Any reliance on this information is solely at your own risk. CBRE and the CBRE logo are service marks of CBRE, Inc. All other marks displayed on this document are the property of their respective owners, and the use of such logos does not imply any affiliation with or endorsement of CBRE. Photos herein are the property of their respective owners. Use of these images without the express written consent of the owner is prohibited.