

2000 Avenue P

Riviera Beach, FL 33404

±61,900 SF OFFICE/WAREHOUSE SPACE



PROPERTY HIGHLIGHTS

- + Total Building square footage - ±61,900 SF
- + Available Space:
 - Currently 100% Leased
- + Dock High and Drive In loading
- + 20' Clear Height
- + Tilt-wall Construction
- + Close to Interstate 95, fronting Blue Heron Boulevard
- + ±10% to 15% of existing office
- + Very well maintained
- + Fully secure storage and loading areas
- + Ample Parking
- + Fully sprinklered

Contact Us

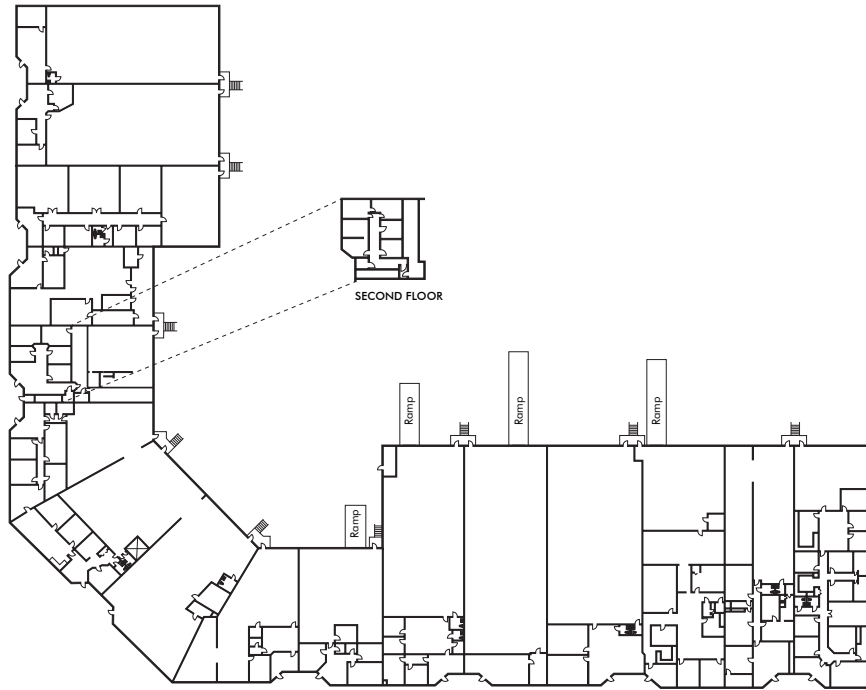
ROBERT SMITH

Executive Vice President
+1 561 707 5558
robert.c.smith@cbre.com

KIRK NELSON

Executive Vice President
+1 561 716 9936
kirk.nelson@cbre.com

Floor Plan



Additional Photos



Contact Us

ROBERT SMITH

Executive Vice President
+1 561 707 5558
robert.c.smith@cbre.com

KIRK NELSON

Executive Vice President
+1 561 716 9936
kirk.nelson@cbre.com

© 2025 CBRE, Inc. All rights reserved. This information has been obtained from sources believed reliable, but has not been verified for accuracy or completeness. You should conduct a careful, independent investigation of the property and verify all information. Any reliance on this information is solely at your own risk. CBRE and the CBRE logo are service marks of CBRE, Inc. All other marks displayed on this document are the property of their respective owners, and the use of such logos does not imply any affiliation with or endorsement of CBRE. Photos herein are the property of their respective owners. Use of these images without the express written consent of the owner is prohibited.