

FOR LEASE  
ADAMO DISTRIBUTION CENTER

4410-4450 E ADAMO DRIVE, TAMPA, FL 33605



DOWNTOWN TAMPA

SELMON EXPRESSWAY

E ADAMO DRIVE

LeaseThisWarehouse.com  
by east>

# ADAMO DISTRIBUTION CENTER



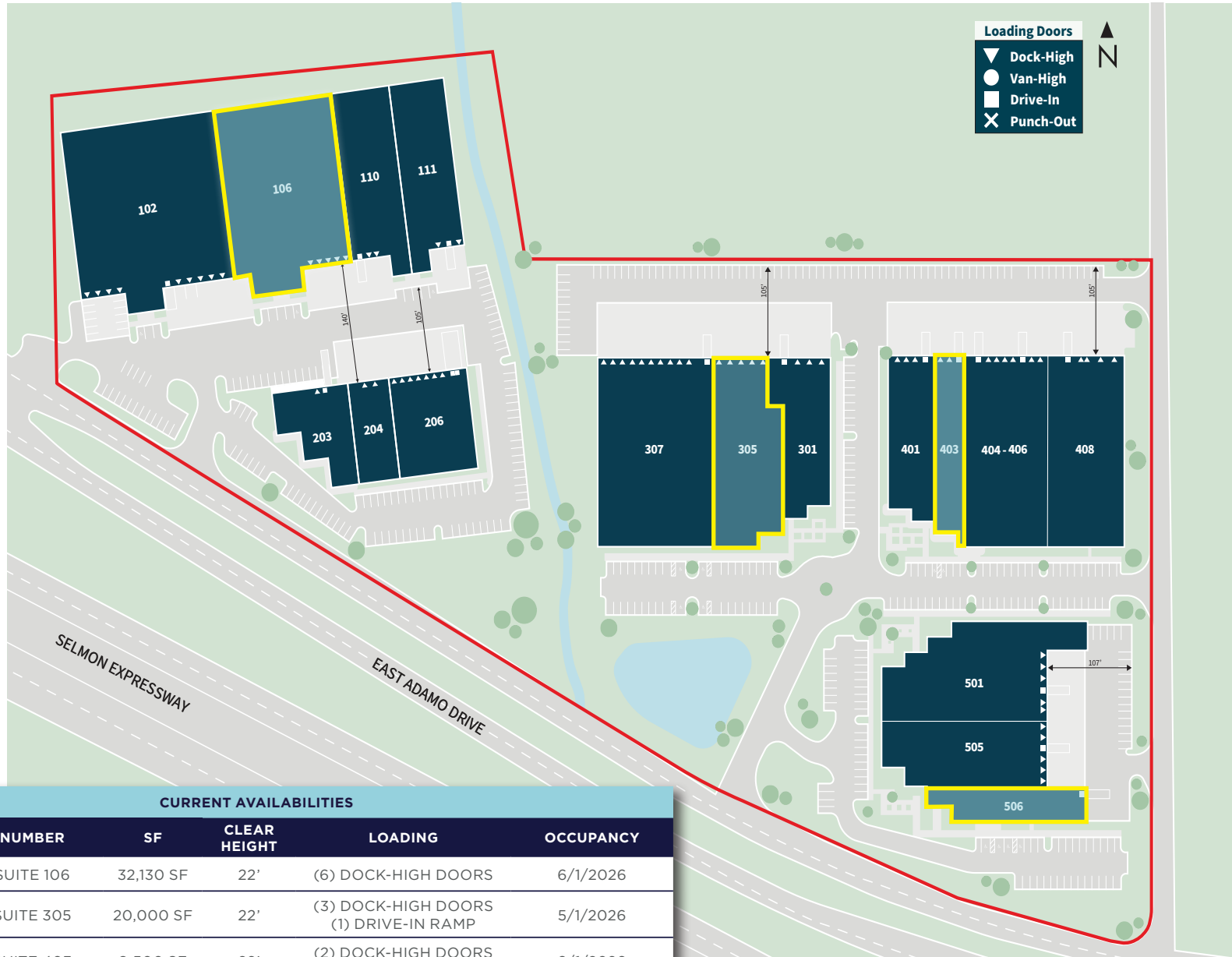
## PROPERTY HIGHLIGHTS

Adamo Distribution Center consists of five warehouses totaling 304,207 SF in the heart of East Tampa's industrial submarket. The park has frontage on the Selmon Expressway with easy access to Downtown Tampa, Tampa International Airport, Port Tampa Bay along with major distribution routes I-4, I-75, and I-275.

### PROPERTY FEATURES

	TOTAL SF	LOAD TYPE	CLEAR HEIGHT	BLDG DIMENSIONS
Building 2	101,744 SF	Front-Load	22'	200' x 490'
Building 3	26,650 SF	Rear-Load	20'	120' x 250'
Building 4	64,551 SF	Rear-Load	22'	225' x 300'
Building 5	64,800 SF	Rear-Load	22'	180' x 300'
Building 6	46,462 SF	Rear-Load	22'	245' x 235'

# SITE PLAN



## CURRENT AVAILABILITIES

BUILDING	NUMBER	SF	CLEAR HEIGHT	LOADING	OCCUPANCY
BUILDING 2	SUITE 106	32,130 SF	22'	(6) DOCK-HIGH DOORS	6/1/2026
BUILDING 4	SUITE 305	20,000 SF	22'	(3) DOCK-HIGH DOORS (1) DRIVE-IN RAMP	5/1/2026
BUILDING 5	SUITE 403	8,500 SF	22'	(2) DOCK-HIGH DOORS (1) DRIVE-IN DOOR	9/1/2026
BUILDING 6	SUITE 506	7,470 SF	22'	(1) DRIVE-IN DOOR	AVAILABLE NOW

# SUITE 106

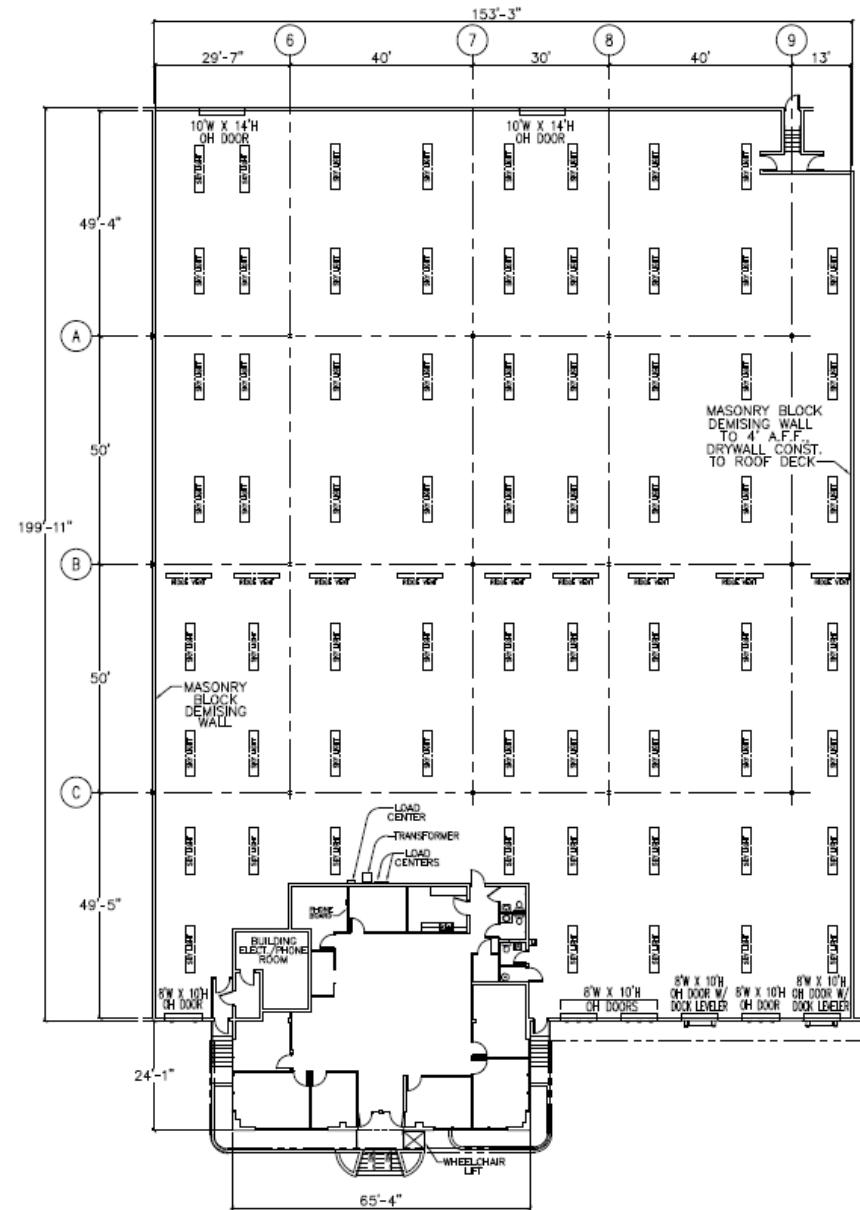
TOTAL SF 32,130 SF

OFFICE SF 2,975 SF

LOADING Six (6) Dock High Doors

CLEAR HEIGHT 22'

AVAILABLE 6/1/2026



# SUITE 305

TOTAL SF 20,000 SF

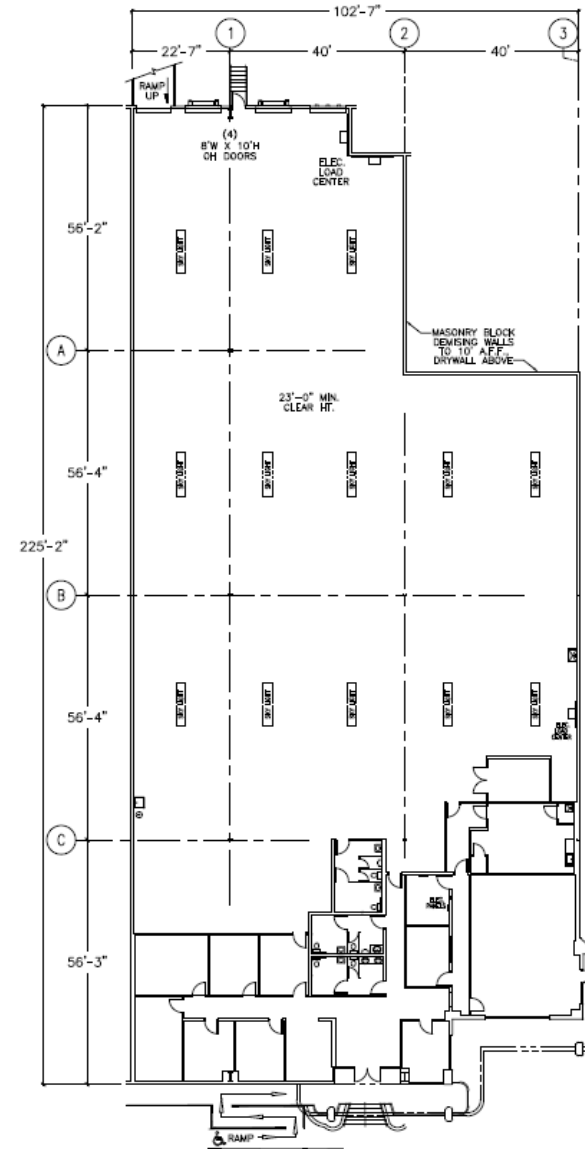
OFFICE SF 4,524 SF

LOADING Three (3) Dock High Doors  
One (1) Drive-in Ramp

CLEAR HEIGHT 22'

CLIMATE CONTROL Fully Air-Conditioned  
Warehouse

AVAILABLE 5/1/2026



# SUITE 403

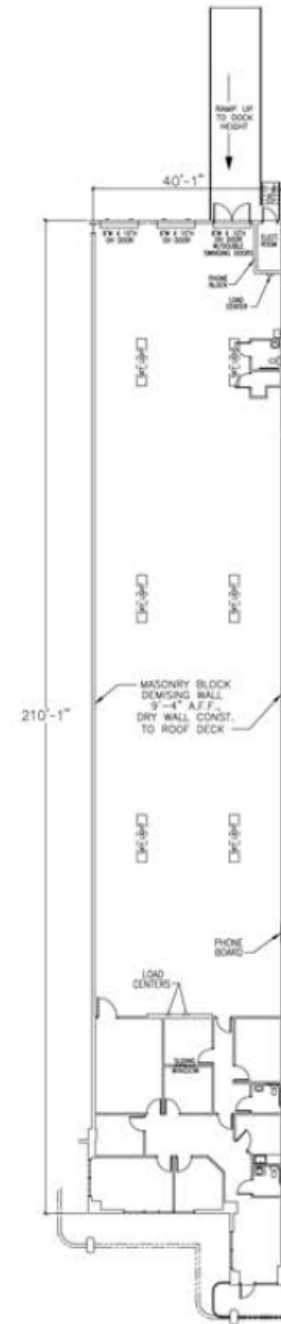
**TOTAL SF** 8,500 SF

**OFFICE SF** 1,900 SF

**LOADING** Two (2) Dock High Doors  
One (1) Drive in Door

**CLEAR HEIGHT** 22'

**AVAILABLE** 9/1/2026



# SUITE 506

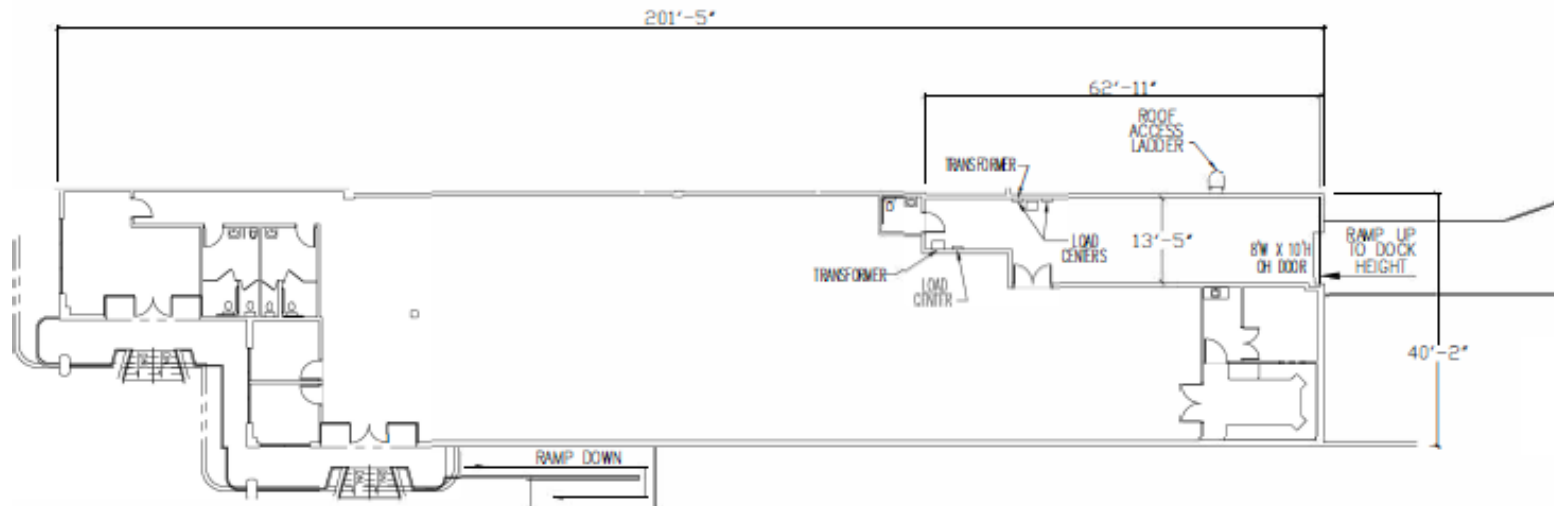
TOTAL SF 7,470 SF

SHOWROOM SF 6,314 SF

LOADING One (1) Drive in Door

CLEAR HEIGHT 22'

AVAILABLE Available Now



# LOCATION HIGHLIGHTS



DOWNTOWN  
TAMPA

PORT  
TAMPA BAY

ADAMO  
DISTRIBUTION  
CENTER

**5 MIN**

TO INTERSTATE 4

**7 MIN**

TO INTERSTATE 275

**10 MIN**

TO INTERSTATE 75

**25 MIN**

TO ST-PETE-CLEARWATER  
INTERNATIONAL AIRPORT

**14 MIN**

TO TAMPA  
INTERNATIONAL AIRPORT

**10 MIN**

TO PORT  
TAMPA BAY



**FOR MORE INFORMATION, CONTACT:**

**LISA ROSS, SIOR**  
Executive Director  
+1 813 760 3209  
lisa.ross@cushwake.com

**TREY CARSWELL, SIOR**  
Executive Director  
+1 813 230 6131  
trey.carswell@cushwake.com

**SAM KOROLOS**  
Director  
+1 704 989 1327  
sam.korolos@cushwake.com

**MELISSA WATTERWORTH**  
Senior Associate  
+1 813 599 2190  
melissa.watterworth@cushwake.com



**LeaseThisWarehouse.com**  
by east>

©2025 Cushman & Wakefield. All rights reserved. The information contained in this communication is strictly confidential. This information has been obtained from sources believed to be reliable but has not been verified. NO WARRANTY OR REPRESENTATION, EXPRESS OR IMPLIED, IS MADE AS TO THE CONDITION OF THE PROPERTY (OR PROPERTIES) REFERENCED HEREIN OR AS TO THE ACCURACY OR COMPLETENESS OF THE INFORMATION CONTAINED HEREIN, AND SAME IS SUBMITTED SUBJECT TO ERRORS, OMISSIONS, CHANGE OF PRICE, RENTAL OR OTHER CONDITIONS, WITHDRAWAL WITHOUT NOTICE, AND TO ANY SPECIAL LISTING CONDITIONS IMPOSED BY THE PROPERTY OWNER(S). ANY PROJECTIONS, OPINIONS OR ESTIMATES ARE SUBJECT TO UNCERTAINTY AND DO NOT SIGNIFY CURRENT OR FUTURE PROPERTY PERFORMANCE.